

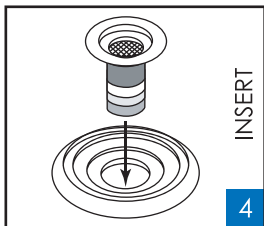
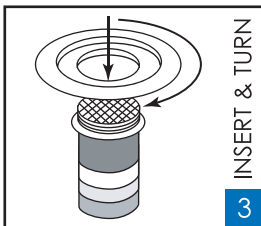
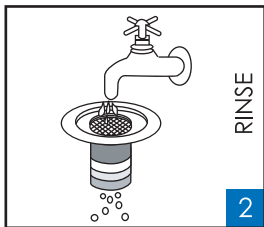
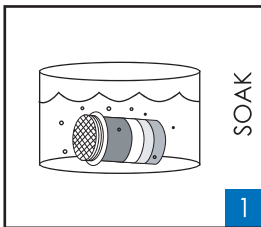


DT PRODUCT GUIDE

PURE-ALKA CARTRIDGE FILTER

ABOUT

A multi-step filter made of a granular zeolite layer for ion exchange, a silicon layer for capturing organic matter, and a complex quartz filtration layer with more than 45 kinds of minerals.



ASSEMBLY IN PURE-ALKA SYSTEM

1. Soak the cartridge filter in water for 3 minutes.
2. Thoroughly rinse the filter under running water.
3. Insert the cartridge filter into the filter hanger and turn to attach. (Note: The cartridge filter will be replaced, but the filter hanger will be used continuously. DO NOT throw out the filter hanger.)
4. Place the assembled filter and filter hanger into the center hole of the lower water tank cover

MAINTENANCE

- Replace after 6 to 12 months depending on use.
- Purifies up to 5000 liters

Dream Tree Family, Inc.

Tel: 1-888-618-5950 • Fax: 713-988-8839

E-mail: support@DreamTreeFamily.com